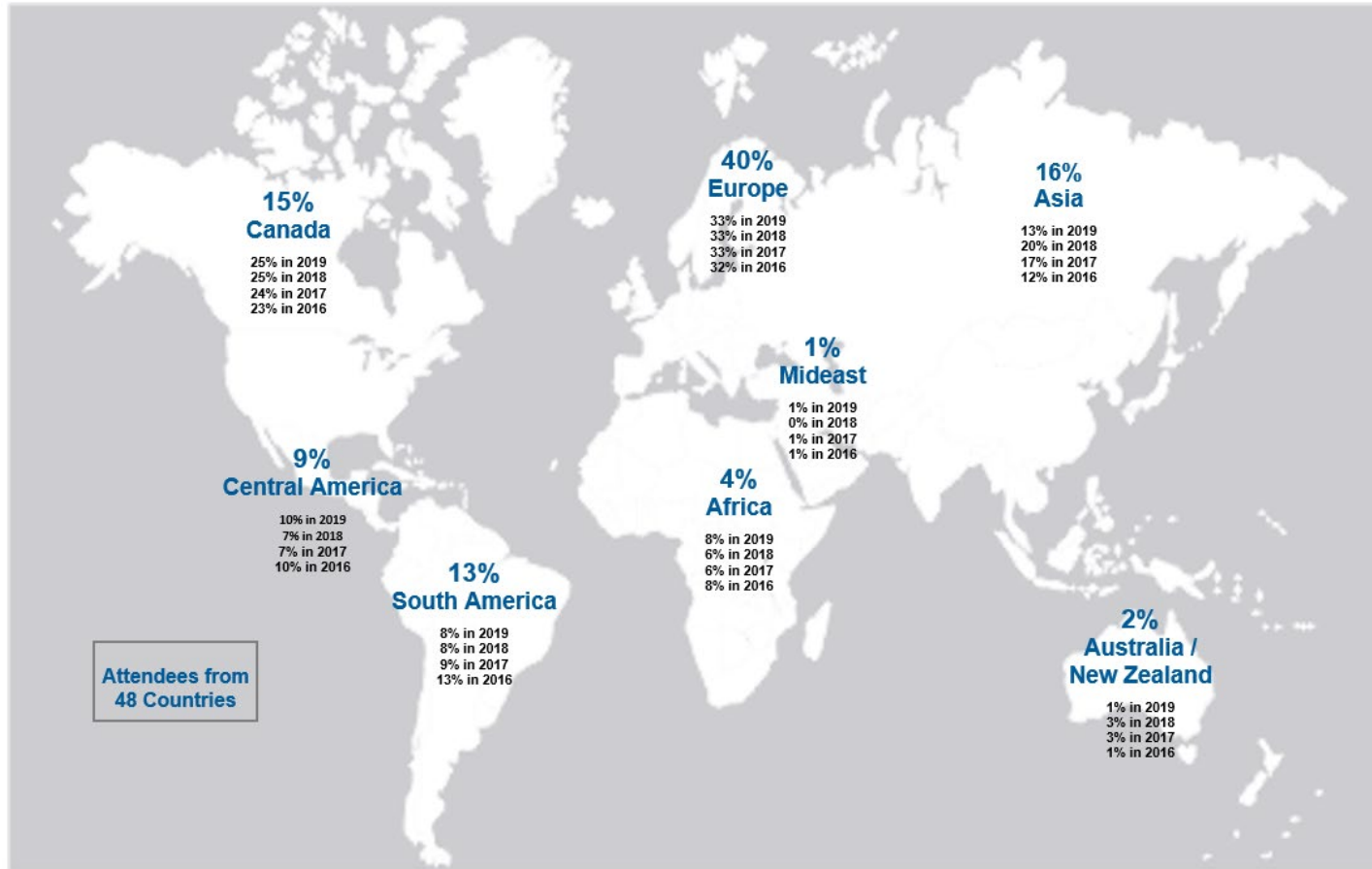


# Demographic Breakdown of Attendees

EDGE 2020 Live!

# CSCMP 2020 EDGE Conference Demographics

*International Attendance by Region (percent of total international registration)*

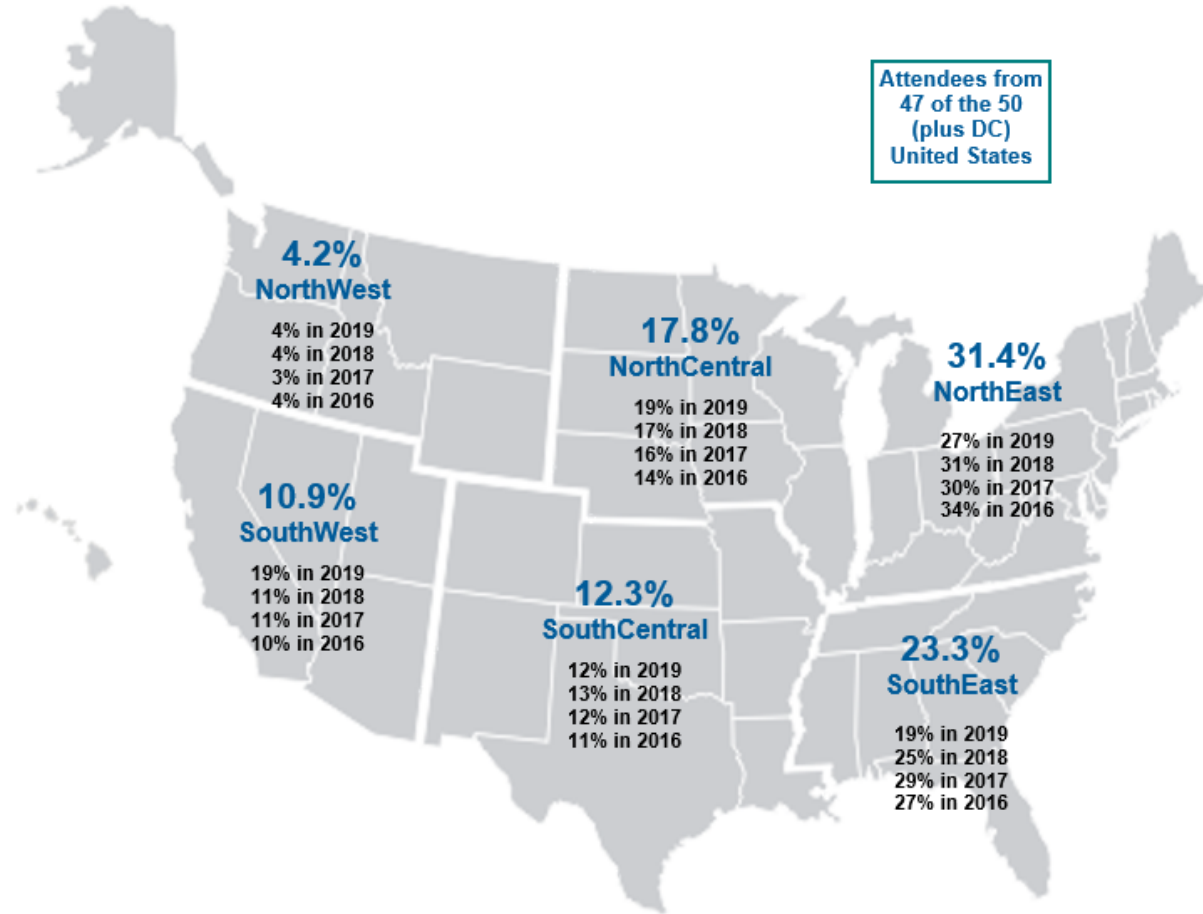


- Argentina
- Australia
- Austria
- Belgium
- Bolivia
- Brazil
- Canada
- China
- Colombia
- Congo
- Ecuador
- Egypt
- Finland
- France
- Germany
- Ghana
- Greece
- Guatemala
- Honduras
- Hong Kong
- Hungary
- India
- Ireland
- Italy
- Japan
- Mexico
- Netherlands
- New Zealand
- Norway
- Panama
- Paraguay
- Peru
- Philippines
- Poland
- Russian Federation
- Saudi Arabia
- Singapore
- South Africa
- Spain
- Sweden
- Switzerland
- Taiwan
- Thailand
- Ukraine
- United Arab Emirates
- United Kingdom
- Uruguay
- Viet Nam

# CSCMP 2020 EDGE Conference Demographics

*United States Attendance by Region (percent of total US registration)*

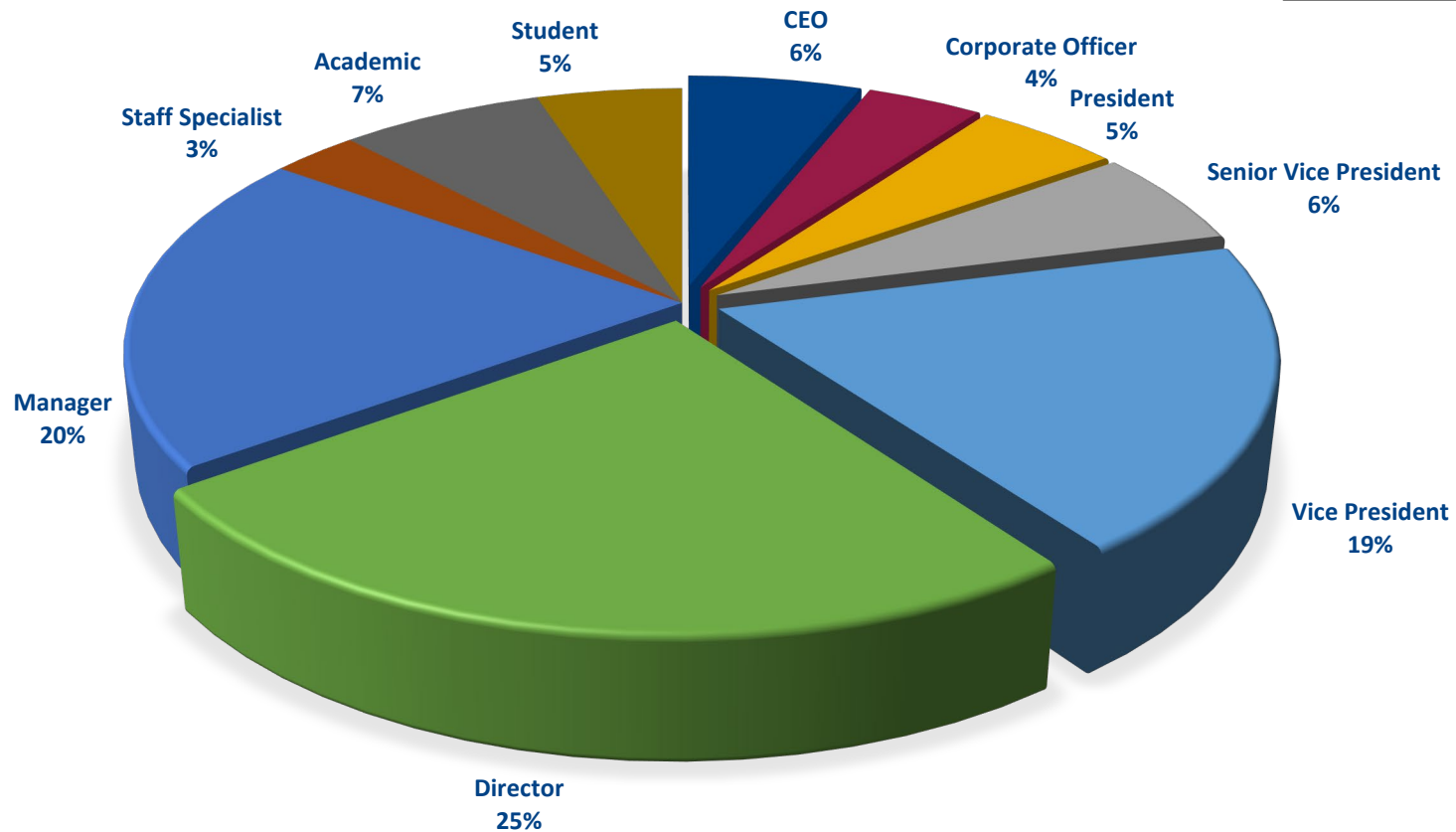
- Alabama
- Alaska
- Arizona
- Arkansas
- California
- Colorado
- Connecticut
- Delaware
- District of Columbia
- Florida
- Hawaii
- Idaho
- Illinois
- Indiana
- Iowa
- Kansas
- Kentucky
- Louisiana
- Maine
- Maryland
- Massachusetts
- Michigan
- Minnesota
- Mississippi
- Missouri
- Nevada
- New England
- New Hampshire
- New Jersey
- New Mexico
- New York
- North Carolina
- North Dakota
- Ohio
- Oregon
- Pennsylvania
- Rhode Island
- South Carolina
- South Dakota
- Tennessee
- Texas
- Utah
- Virginia
- Washington
- West Virginia
- Wisconsin



# CSCMP 2020 EDGE Conference Demographics

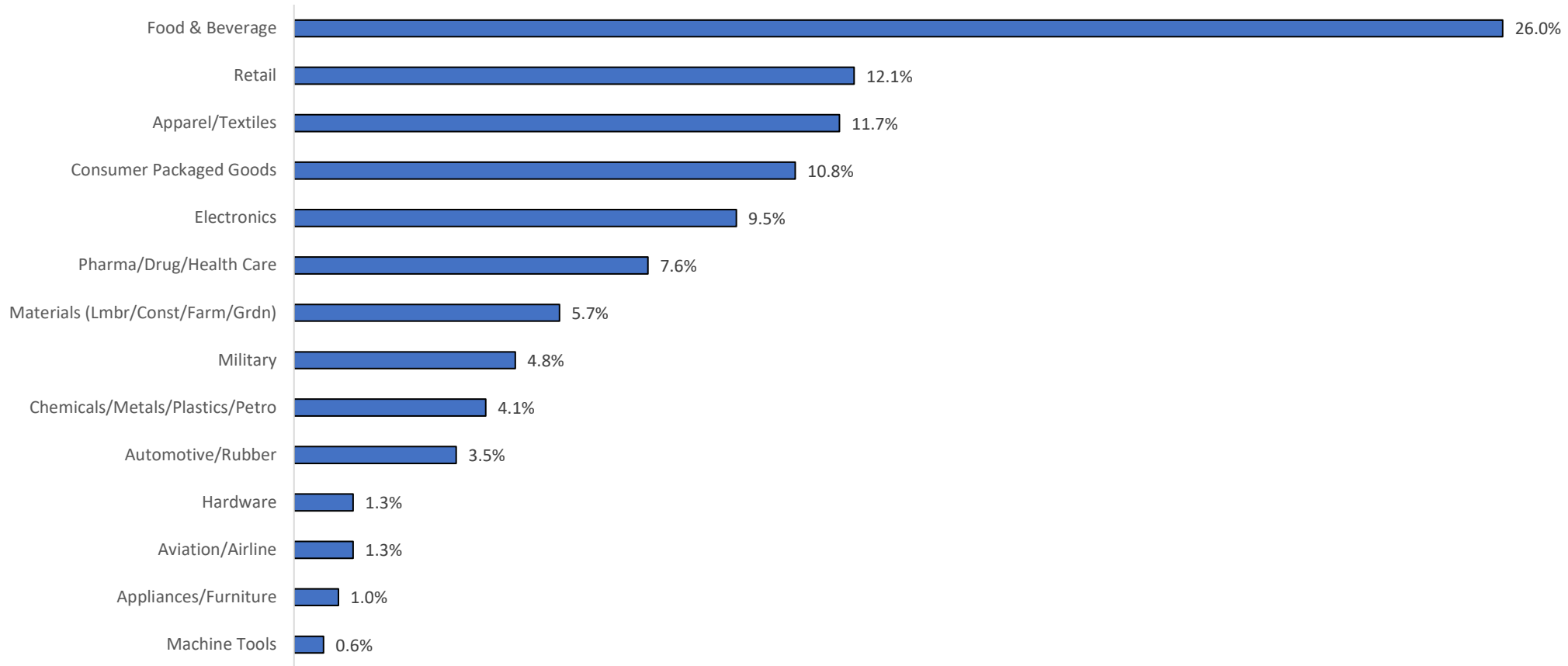
*Responsibility Level (percent of known levels among all registration)*

**65% of 2020 EDGE Conference Attendees are at the Director Level and Above**



# CSCMP 2020 EDGE Conference Demographics

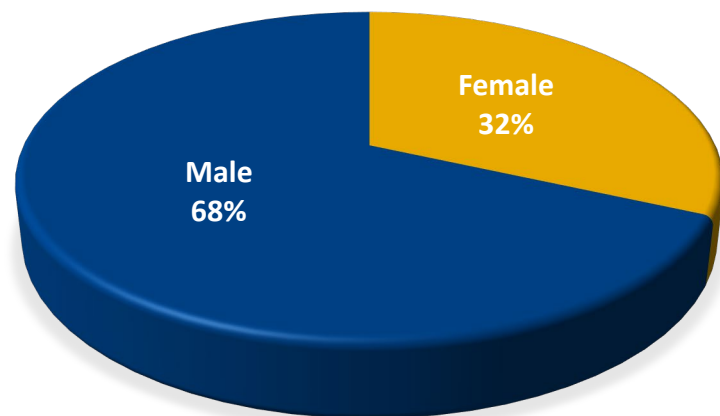
*Industry Type of Conference Practitioners (all conference attendees)*



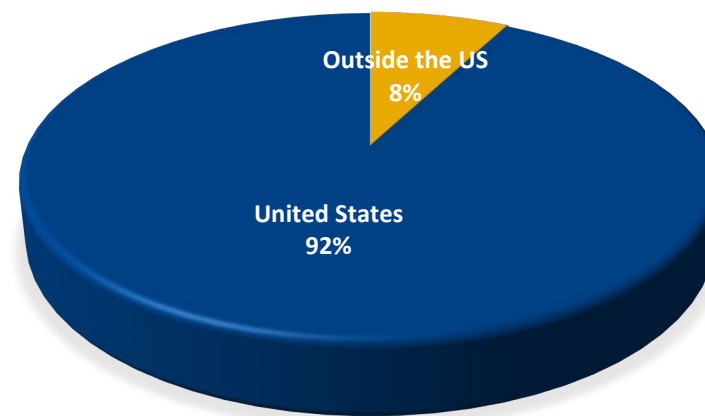
# CSCMP 2020 EDGE Conference Demographics

*Non-US versus US/Gender (all registrations)*

**GENDER**



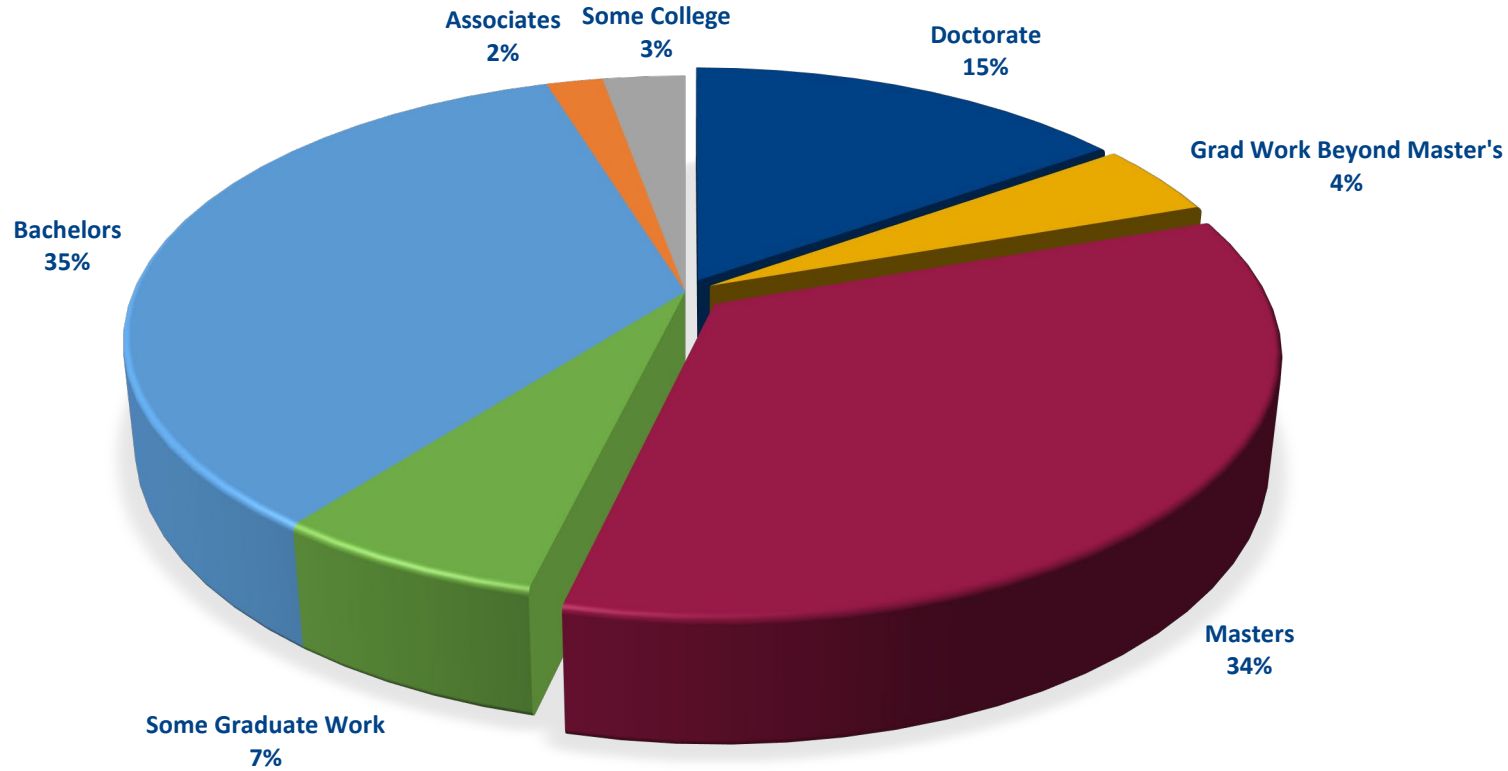
**US/NON-US**



# CSCMP 2020 EDGE Conference Demographics

*Educational Level (percent of known levels among all registrations)*

**53% (of known levels) of 2020 EDGE Attendees have attained a Master's Degree or Above**



# CSCMP 2020 EDGE Conference Demographics

## Fortune 500 Companies in Attendance

### FORTUNE 50

- 1 Walmart
- 2 Amazon.com
- 10 AmerisourceBergen
- 16 Cardinal Health
- 18 General Motors
- 25 Bank of America
- 28 Comcast
- 29 Anthem
- 34 Dell Technologies
- 35 Johnson & Johnson
- 37 Target
- 38 IBM
- 44 Lowe's
- 45 Intel
- 47 FedEx
- 49 Walt Disney
- 50 Procter & Gamble
- 47 FedEx
- 48 PepsiCo

### FORTUNE 100

#### Fortune 50 Plus

- 51 PepsiCo
- 56 Sysco
- 57 Lockheed Martin
- 58 HP
- 62 Caterpillar
- 63 Cisco Systems
- 65 HCA Healthcare
- 75 Best Buy
- 78 Dow
- 85 Nike
- 88 Coca-Cola
- 90 Tech Data
- 99 AbbVie

### FORTUNE 250

#### Fortune 100 Plus

- 104 Abbott Laboratories
- 108 Raytheon
- 110 Arrow Electronics
- 112 Dollar General
- 114 Starbucks
- 115 Bristol-Myers Squibb
- 128 CBRE Group
- 144 International Paper
- 161 Danaher
- 162 Whirlpool
- 167 Altria Group
- 175 Kimberly-Clark
- 177 WestRock
- 178 CDW
- 179 Jones Lang LaSalle
- 190 salesforce.com
- 192 General Mills
- 196 XPO Logistics
- 208 C.H. Robinson Worldwide
- 222 Texas Instruments
- 224 Parker-Hannifin
- 229 Illinois Tool Works
- 232 Land O'Lakes

### FORTUNE 500

#### Fortune 250 Plus

- 267 CSX
- 277 Corning
- 278 W.W. Grainger
- 283 Norfolk Southern
- 284 Navistar International
- 297 Office Depot
- 316 Newell Brands
- 323 Campbell Soup
- 348 Wayfair
- 354 Ryder System
- 359 Anixter International
- 380 Tractor Supply
- 389 Expeditors Intl. of Washington
- 412 Veritiv
- 429 Arthur J. Gallagher
- 439 NCR
- 468 Dillard's
- 477 Graphic Packaging Holding
- 479 HD Supply Holdings
- 485 Tapestry
- 489 Williams-Sonoma
- 495 Levi Strauss

Percentage of Companies in Attendance

