

2015 ONPHA Conference & Trade Show



Session #503:  
**Engaging Peer Staff:  
GRASSROOTS  
RESEARCH**

Presented by Working for Change and Habitat Services



Working for Change is a charitable organization that develops training and employment opportunities for people with mental health and addiction issues

## Grassroots Research is one of our social enterprises

We also operate:

- the Raging Spoon Catering Company
- Out of This World Café and Grill,
- College Street Café, and
- Parkdale Green Thumb Enterprises



2015 ONPHA Conference & Trade Show

#ONPHAconf

- We conduct community based research projects for other non-profits, community agencies and academic institutions, employing community based researchers
- We will either provide community researchers or train people from a specific community



2015 ONPHA Conference & Trade Show

#ONPHAconf

## Organizations we have worked with include:

- WoodGreen Community Services
- Parkdale Activity and Recreation Centre (PARC)
- Habitat
- AIS
- Richview Residences



2015 ONPHA Conference & Trade Show

#ONPHAconf

## Advantages of community based researchers:

- People who are part of a community often have an in-depth understanding of issues such as poverty and homelessness
- They are trusted by other community members
- They can create a positive experience for people being interviewed and effectively explain the research purpose



2015 ONPHA Conference & Trade Show

#ONPHAconf

## Our training includes:

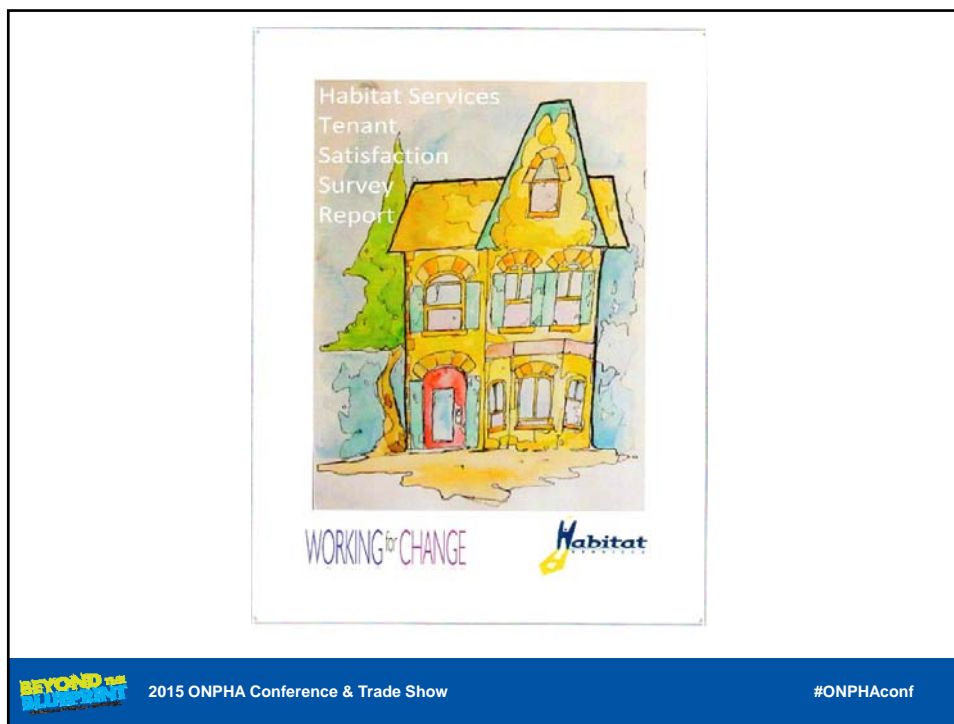
- Quantitative and qualitative research methodologies – what do these terms mean?
- Confidentiality issues and consent forms
- Note taking and recording
- Development of questionnaires
- Interviewing techniques
- Focus group skills
- Data compilation and analysis



2015 ONPHA Conference & Trade Show

#ONPHAconf

- Our community based researchers work with experienced senior researchers throughout the process
- They attend meetings as the work progresses
- The researchers are involved in interviewing, facilitating focus groups, data entry and data analysis
- Reports are written by the senior researchers and reviewed by the community researchers



## The Habitat Services research process

Included:

- 45 sites/boardings homes
- 413 interviews
- 113 questions



## Data collection

- Interviews took between 45 minutes and an hour
- The data was collected over a 2 ½ month period
- There were usually 2 or 3 interviewers at each site
- Data was inputted into Survey Monkey as it was collected



2015 ONPHA Conference & Trade Show

#ONPHAconf

## Perspective from Habitat staff

Chris Persaud



2015 ONPHA Conference & Trade Show

#ONPHAconf

# Perspective from a community based researcher

Mohamed Hassan



2015 ONPHA Conference & Trade Show

#ONPHAconf