



## **CSCMP 2017 EDGE (Annual Conference)**

**September 24th through 27th, 2017**

**Atlanta, GA USA**

# **DEMOGRAPHIC BREAKDOWN of CONFERENCE ATTENDEES**

# CSCMP 2017 EDGE (Annual Conference) Demographics

## 39 Countries in Attendance

as of FINAL

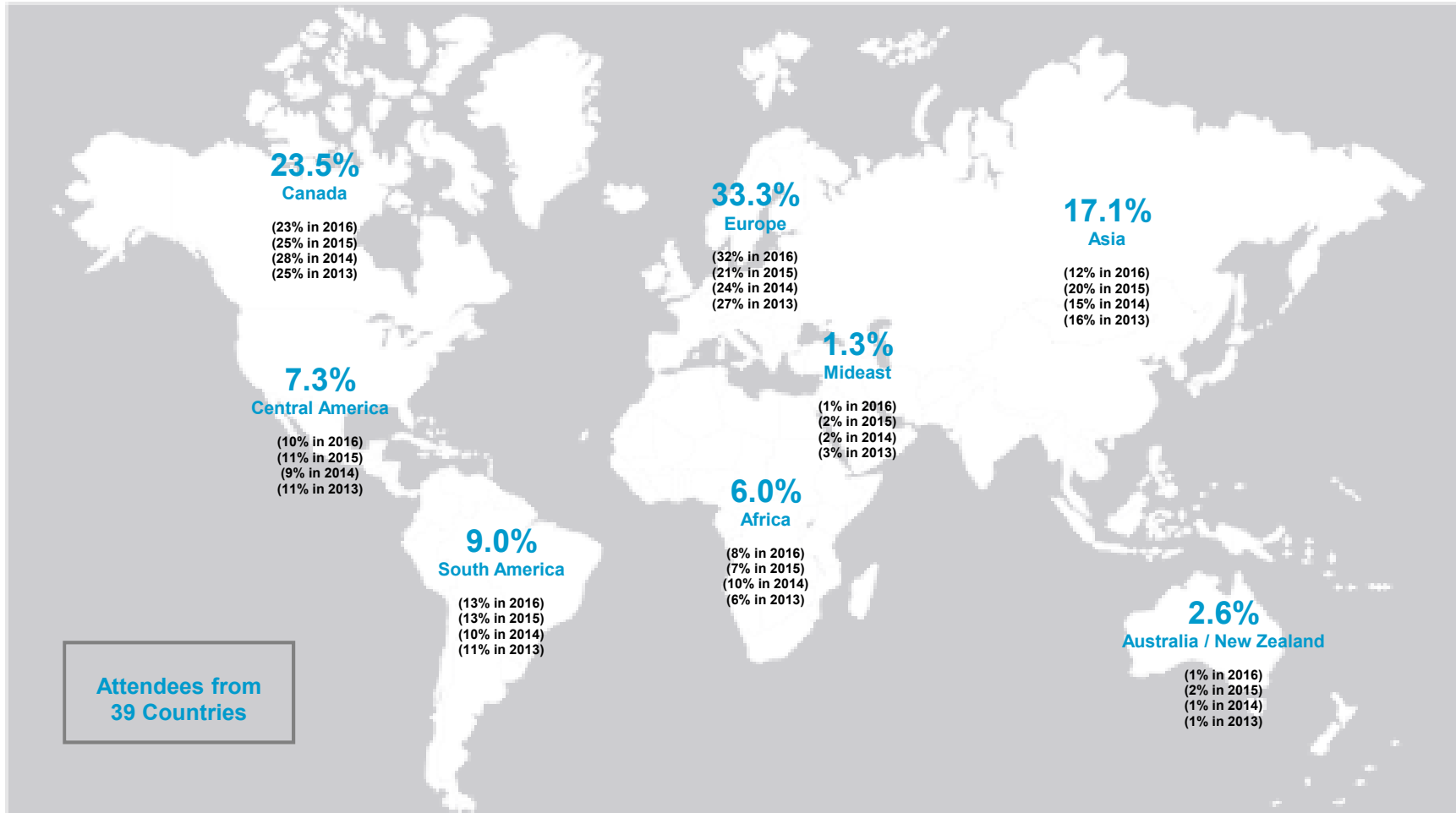


<b>ARGENTINA</b> Argentine Republic 	<b>AUSTRALIA</b> Commonwealth of Australia 	<b>AUSTRIA</b> Republic of Austria 	<b>BELGIUM</b> Kingdom of Belgium 	<b>BRAZIL</b> Federal Republic of Brazil 	<b>CANADA</b> Commonwealth of Canada 	<b>CHINA</b> People's Republic of China 
<b>COLOMBIA</b> Republic of Colombia 	<b>DENMARK</b> Kingdom of Denmark 	<b>FINLAND</b> Republic of Finland 	<b>FRANCE</b> French Republic 	<b>GERMANY</b> Federal Republic of Germany 	<b>GHANA</b> Republic of Ghana 	<b>HONG KONG</b> Hong Kong Special Administrative Region 
<b>INDIA</b> Republic of India 	<b>IRELAND</b> 	<b>ISRAEL</b> State of Israel 	<b>ITALY</b> Italian Republic 	<b>JAPAN</b> 	<b>KENYA</b> Republic of Kenya 	<b>LIBERIA</b> Republic of Liberia 
<b>MEXICO</b> United Mexican States 	<b>NETHERLANDS</b> Kingdom of the Netherlands 	<b>NEW ZEALAND</b> New Zealand 	<b>NIGERIA</b> Federal Republic of Nigeria 	<b>NORWAY</b> Kingdom of Norway 	<b>PANAMA</b> Republic of Panama 	<b>PERU</b> Republic of Peru 
<b>POLAND</b> Republic of Poland 	<b>RUSSIA</b> Russian Federation 	<b>SINGAPORE</b> Republic of Singapore 	<b>SOUTH KOREA</b> Republic of Korea 	<b>SPAIN</b> Kingdom of Spain 	<b>SRI LANKA</b> Democratic Socialist Republic of Sri Lanka 	
	<b>SWEDEN</b> Kingdom of Sweden 	<b>THAILAND</b> Kingdom of Thailand 	<b>UNITED ARAB EMIRATES</b> 	<b>UNITED KINGDOM</b> 	<b>USA</b> United States of America 	

# CSCMP 2017 EDGE (Annual Conference) Demographics

International Attendance by Region (percent of total international registrations)

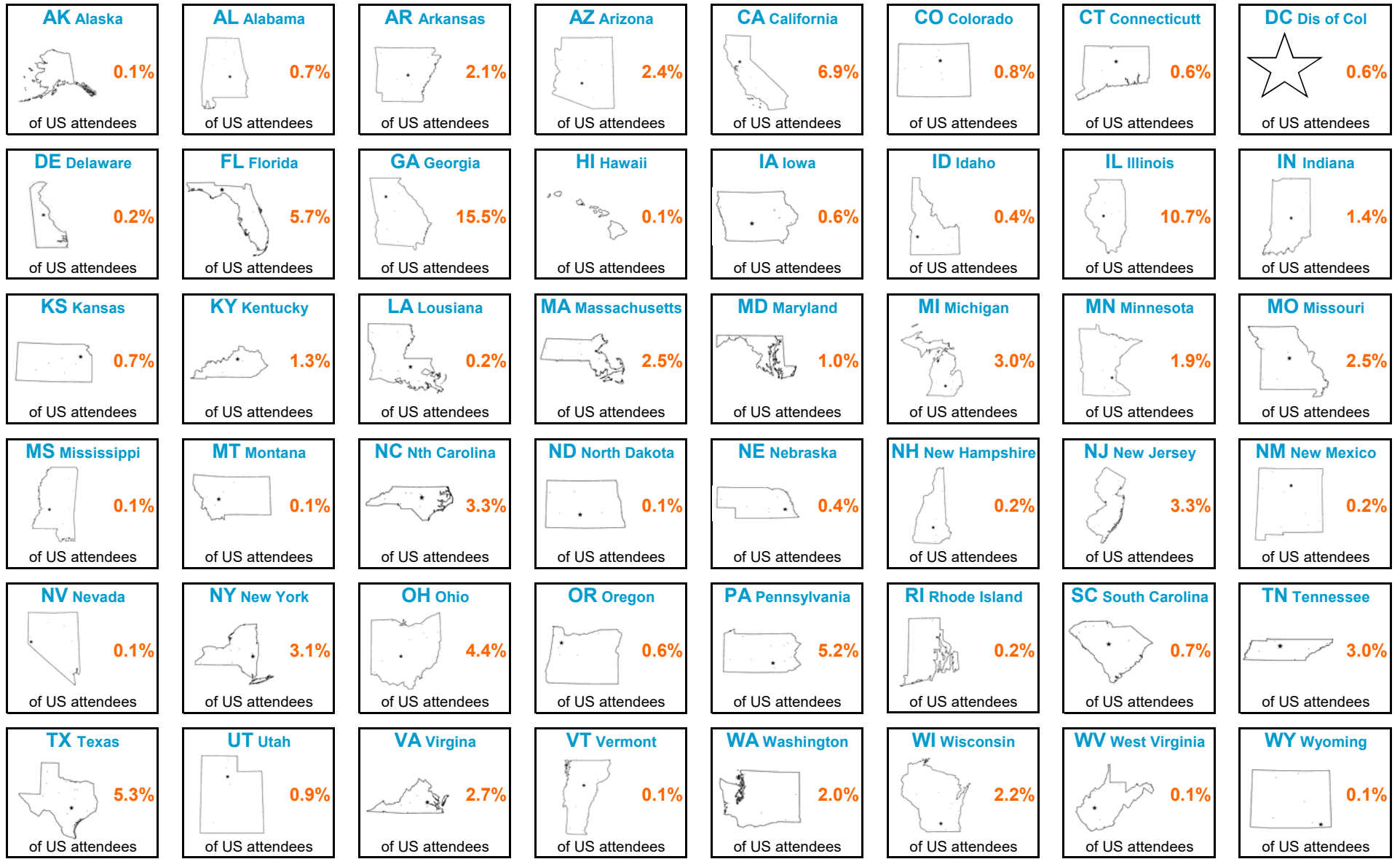
as of FINAL



# CSCMP 2017 EDGE (Annual Conference) Demographics

## 47 States Plus DC in Attendance

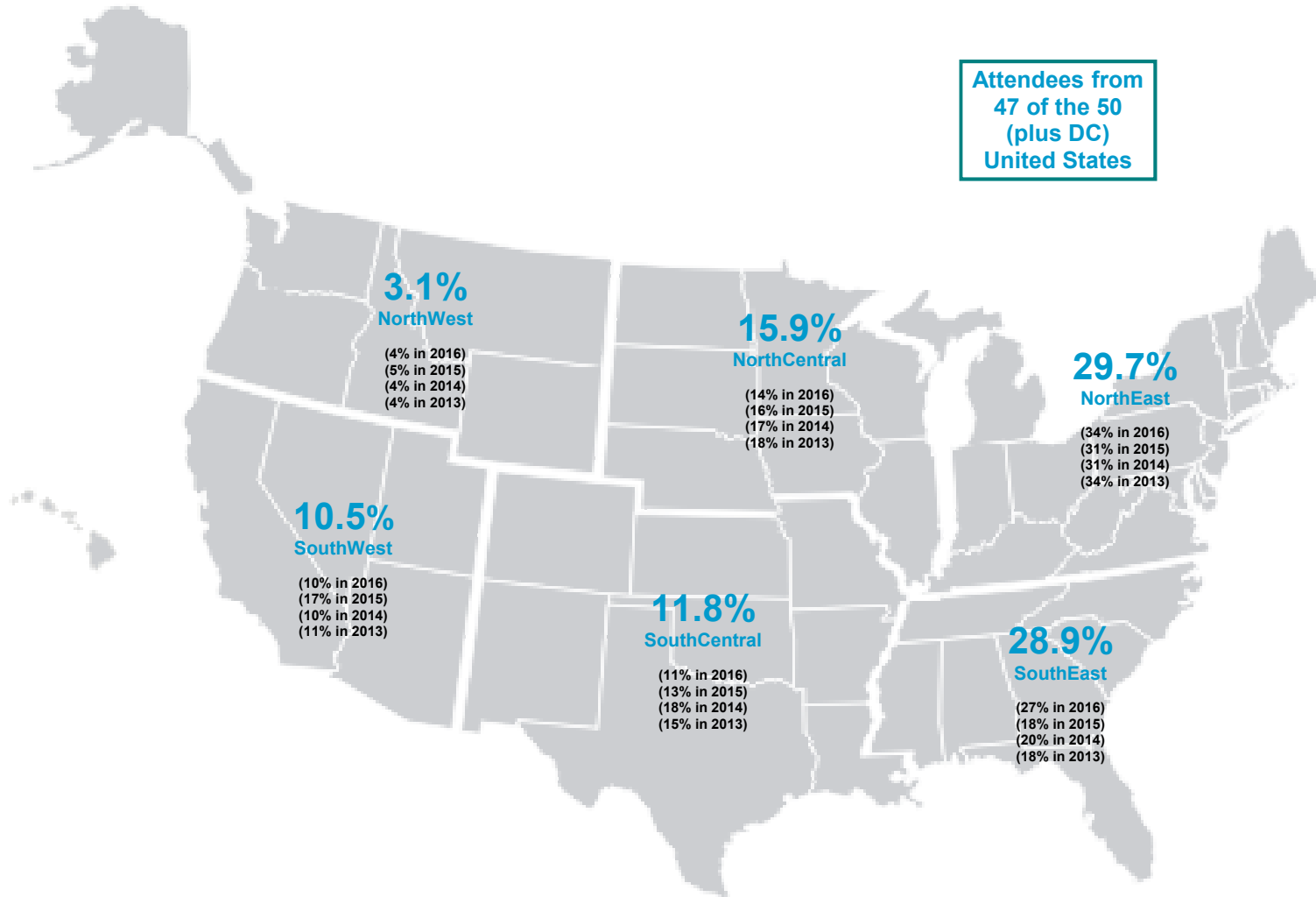
as of FINAL



# CSCMP 2017 EDGE (Annual Conference) Demographics

United States Attendance by Region (percent of total US registrations)

as of FINAL

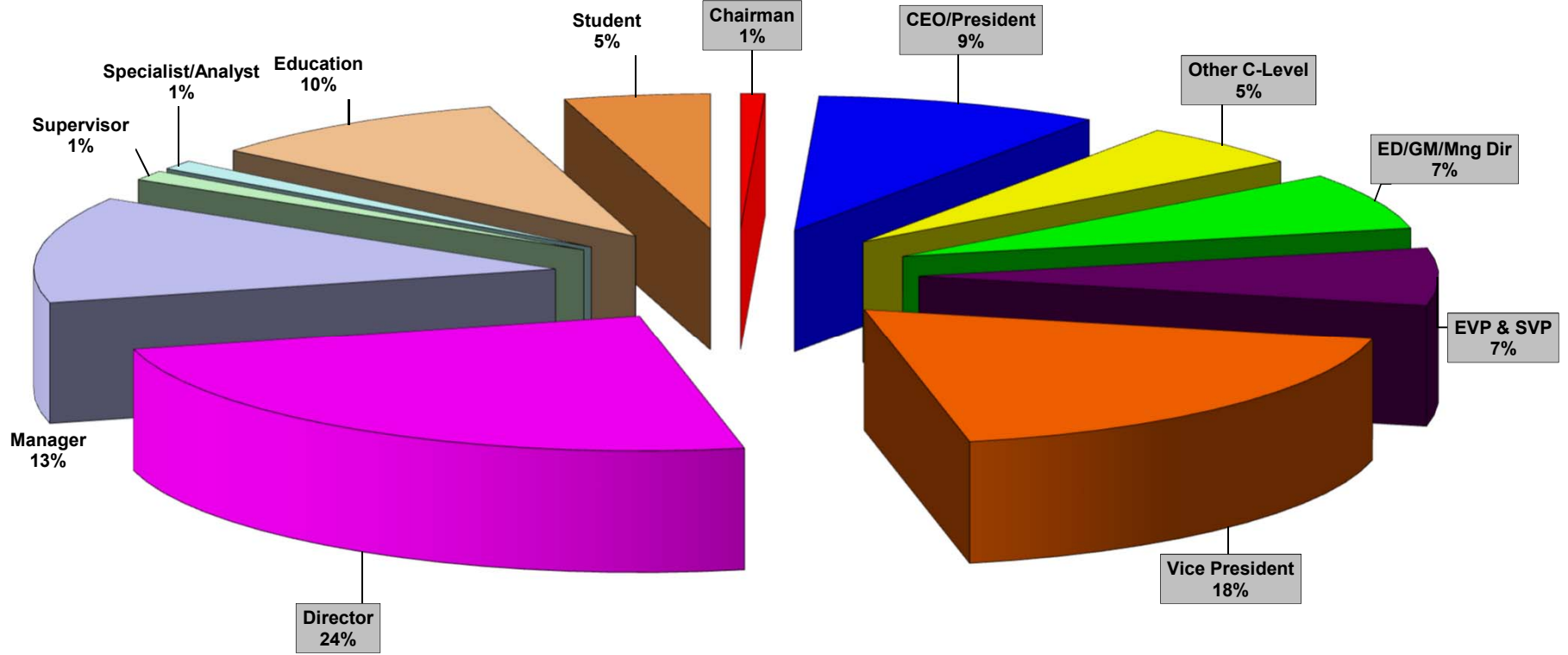


Attendees from  
47 of the 50  
(plus DC)  
United States

# CSCMP 2017 EDGE (Annual Conference) Demographics

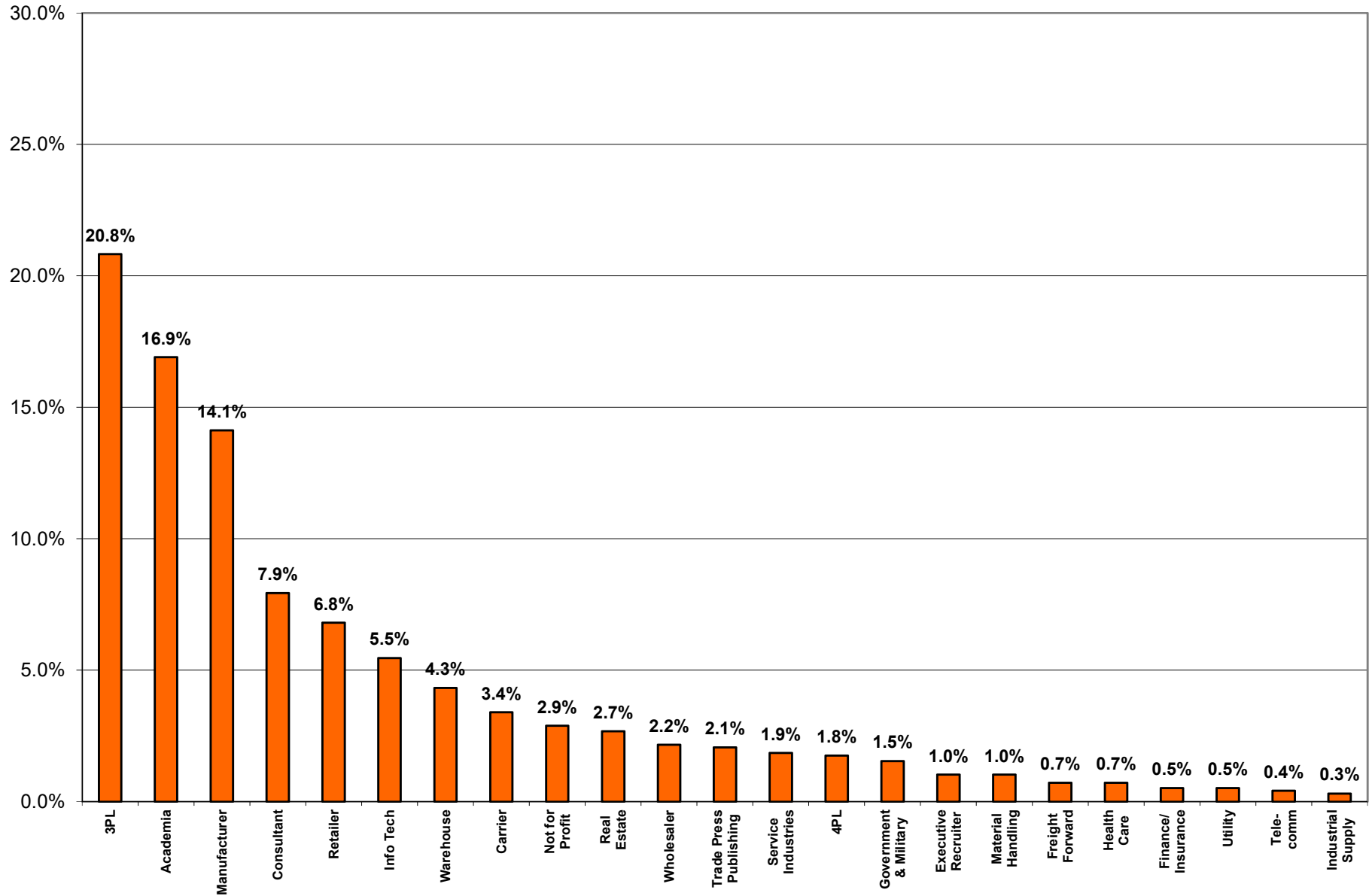
**Responsibility Level** (percent of total registrations)

**71% of 2017 EDGE Conference Attendees were at the Director Level and Above**



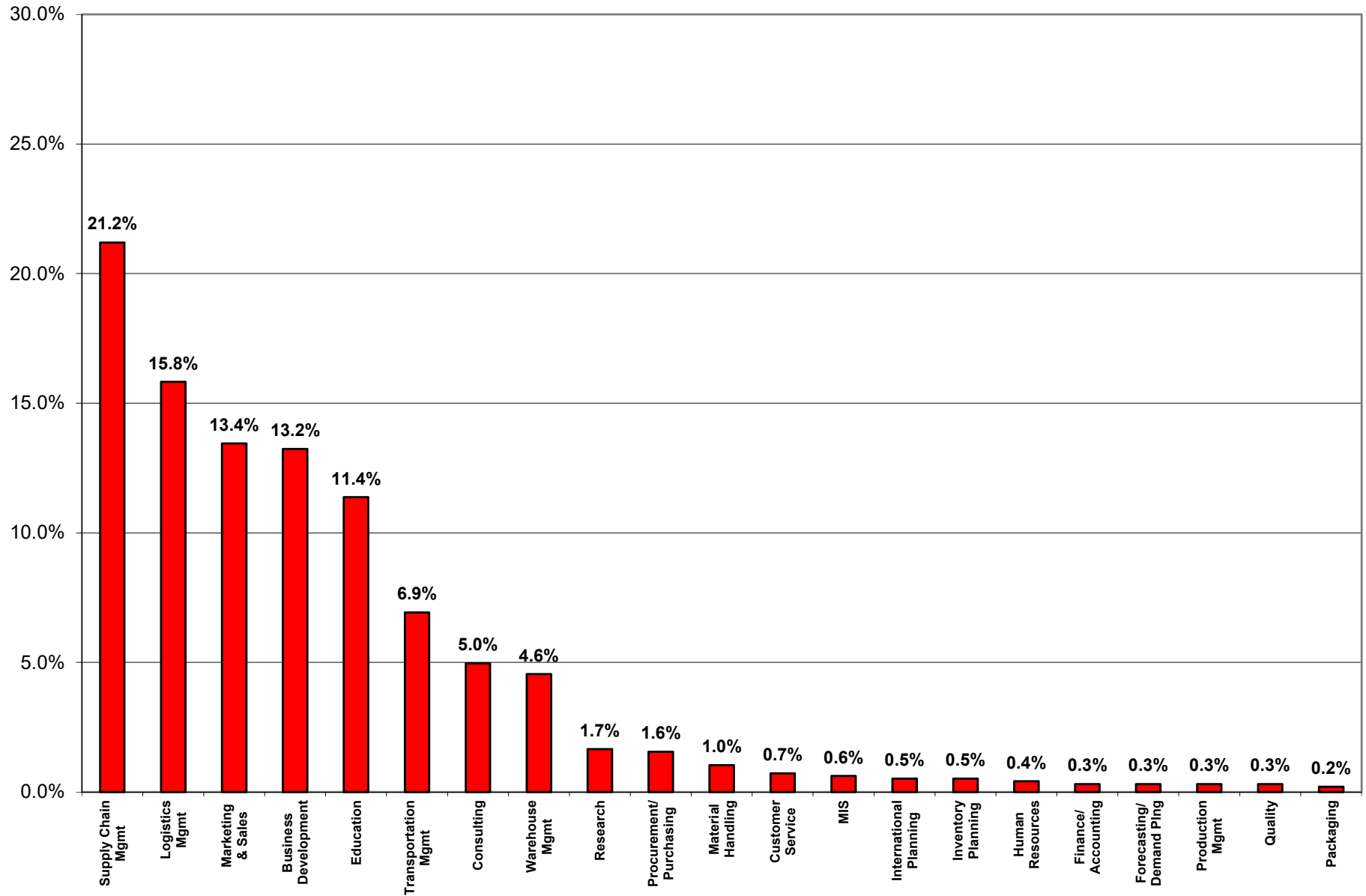
# CSCMP 2017 EDGE (Annual Conference) Demographics

## Type of Business / Organization *(all conference attendees)*



# CSCMP 2017 EDGE (Annual Conference) Demographics

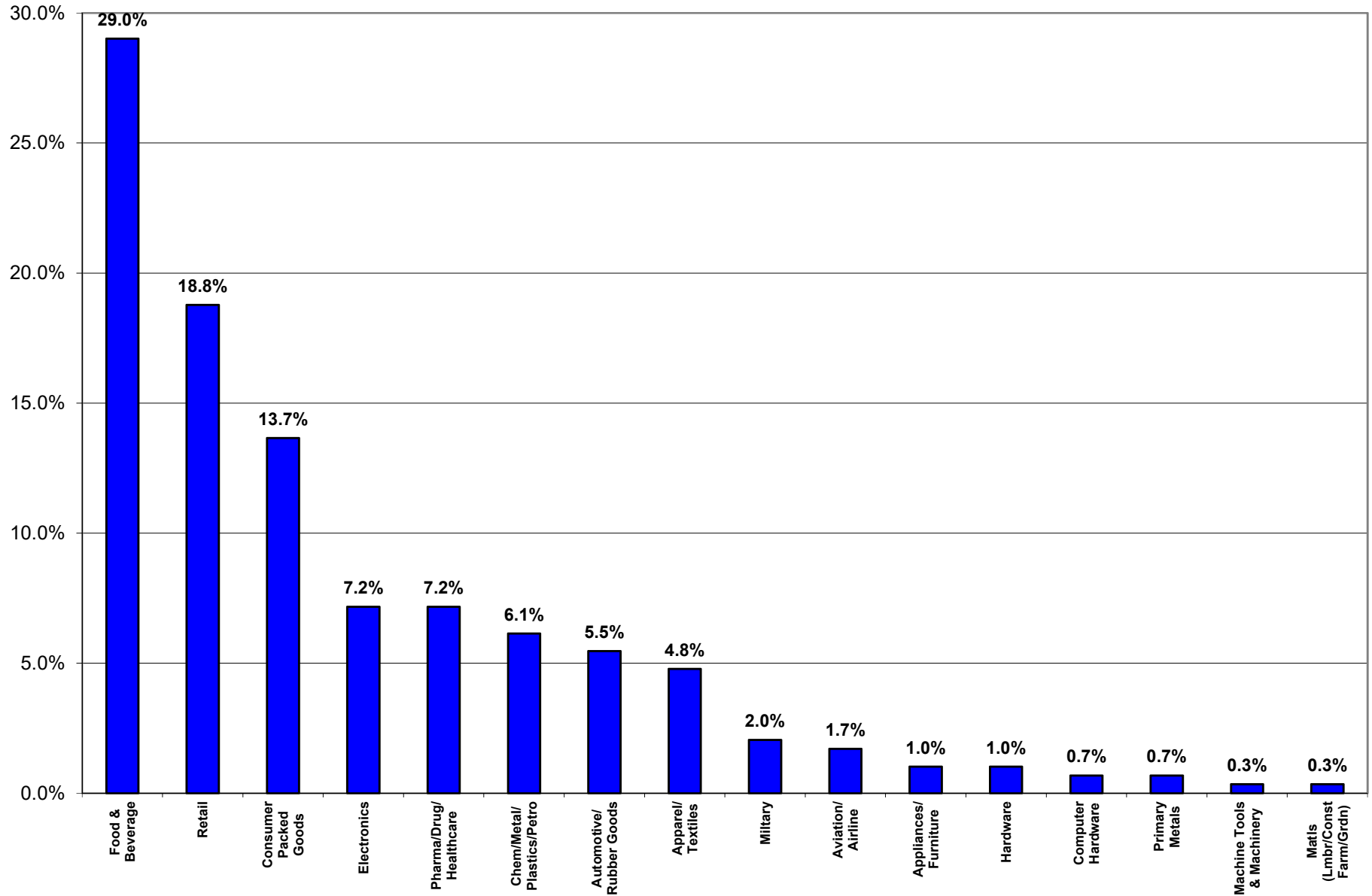
## Functional Responsibility of Conference Practitioners *(all conference attendees)*





# CSCMP 2017 EDGE (Annual Conference) Demographics

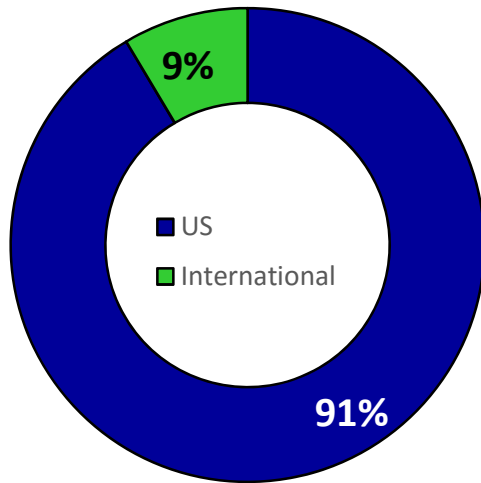
## Industry Type of Conference Practitioners *(all conference attendees)*



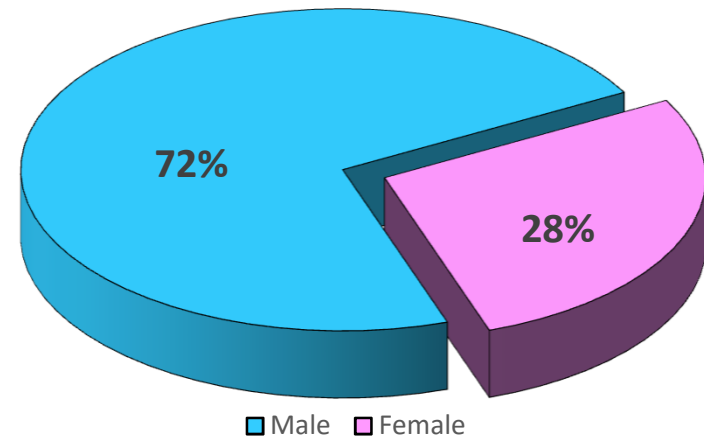
# CSCMP 2017 EDGE (Annual Conference) Demographics



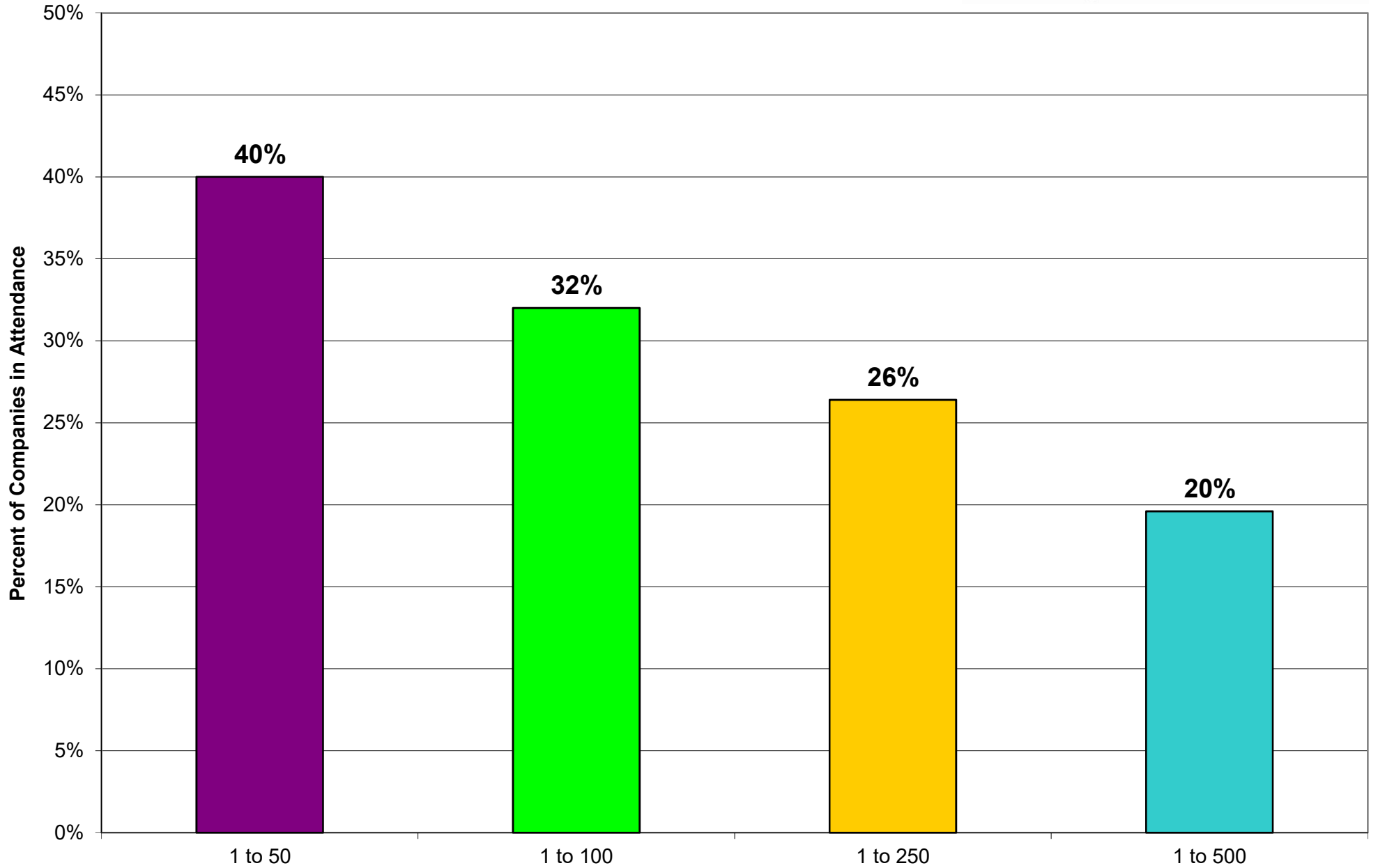
*International vs US Attendees*



*Gender of Attendees*



**CSCMP 2017 EDGE (Annual Conference)**  
**2017 "Fortune" Companies in Attendance as of FINAL**



**CSCMP 2017 EDGE (Annual Conference)**  
**FORTUNE 500 Companies Attending**

as of 2017 FINAL



**FORTUNE 50**

- 1 Wal-Mart
- 8 General Motors
- 12 Amazon
- 13 General Electric
- 15 Cardinal Health
- 19 Chevron
- 21 JP Morgan Chase
- 23 Home Depot
- 24 Boeing
- 25 Wells Fargo
- 26 Bank of America
- 27 Alphabet
- 28 Microsoft
- 32 IBM
- 35 Johnson & Johnson
- 36 Procter & Gamble
- 41 Dell
- 44 Pepsi
- 46 UPS
- 47 Intel

**FORTUNE 100**

**Fortune 50 Plus**

- 52 Disney
- 54 Pfizer
- 58 FedEx
- 60 Cisco
- 64 Coca-Cola
- 73 Honeywell
- 74 Caterpillar
- 81 Oracle
- 86 American Express
- 88 Nike
- 90 General Dynamics
- 96 Charter Communications

**FORTUNE 250**

**Fortune 100 Plus**

- 102 USAA
- 105 Deere
- 107 Tech Data
- 108 Avnet
- 109 Mondelez
- 110 Macy's
- 111 AbbVie
- 125 US Bankcorp
- 128 Dollar General
- 133 International Paper
- 137 Whirlpool
- 138 Southwest Airlines
- 140 Staples
- 142 Penske
- 144 Danaher
- 145 Southern
- 147 Bristol-Myers Squibb
- 149 Fluor
- 155 Kimberly-Clark
- 159 Cummins
- 174 CarMax
- 182 Colgate-Palmolive
- 190 WestRock
- 191 XPO Logistics
- 197 Conagra
- 199 CDW
- 202 Illinois Tool Works
- 204 Monsanto
- 206 Texas Instruments
- 212 C.H. Robinson
- 214 CBRE
- 220 L Brands
- 221 J.C. Penney
- 248 Biogen

**FORTUNE 500**

**Fortune 250 Plus**

- 251 Parker-Hannifin
- 253 Estee Lauder
- 257 CSX
- 282 W.W. Grainger
- 284 Norfolk Southern
- 287 Sonic Automotive
- 291 Murphy USA
- 299 Republic Services
- 303 SunTrust Banks
- 311 Mohawk Industries
- 313 Frontier Communications
- 331 Veritiv
- 350 SpartanNash
- 363 Harris
- 369 Hershey
- 391 JLL
- 394 Ryder Systems
- 396 Tractor Supply
- 397 Sealed Air
- 407 J.B. Hunt Transport
- 408 Constellation Brands
- 416 Dr Pepper Snapple Group
- 417 Dillard's
- 429 Expeditors
- 430 Avery Dennison
- 435 Harley-Davidson
- 442 Rockwell Automation
- 443 Adobe Systems
- 450 Packaging Corporation
- 453 Clorox
- 460 Market
- 473 Insight Enterprises

# CSCMP 2017 EDGE (Annual Conference) Demographics

**Education Level** (percent of known levels among all registrations)

