



Session 307: Local Priorities

Kelly Black
Social Housing Manager District of
Timiskaming Social Services
Administration Board

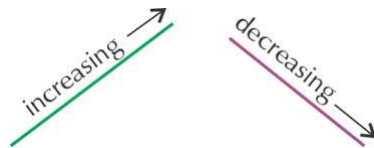


Map of Timiskaming



TIMISKAMING DISTRICT

- Located in North Eastern Ontario
- 23 Municipalities spanning 13,300 sq. km
- Population of approximately 32,634
- Population will decrease by 10% by 2031
- High percentage of 50+ which will continue to increase over the next 15 years



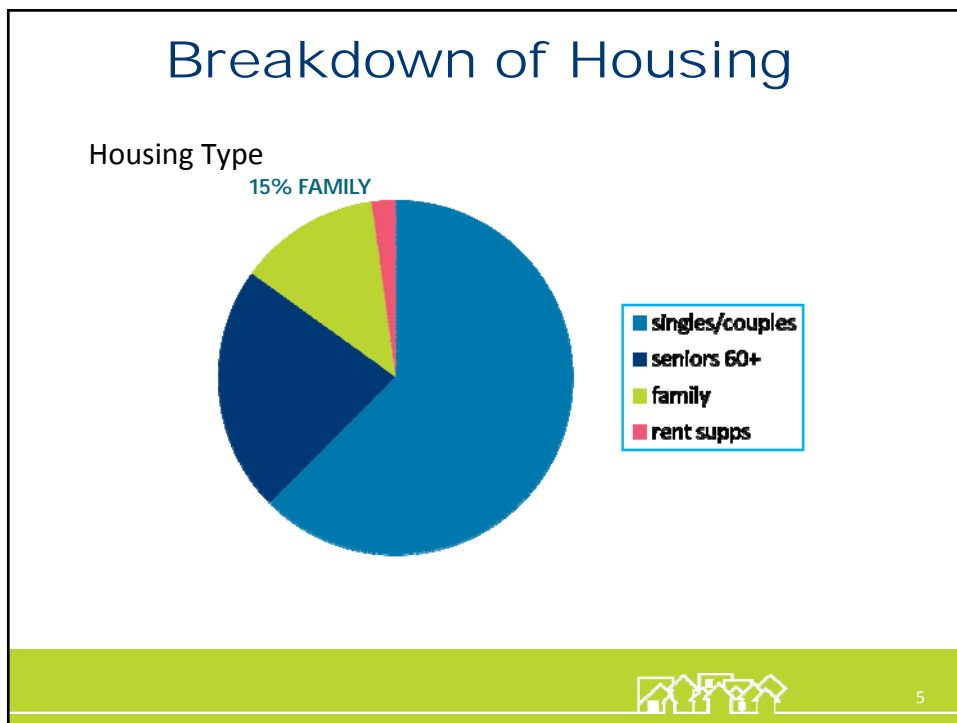
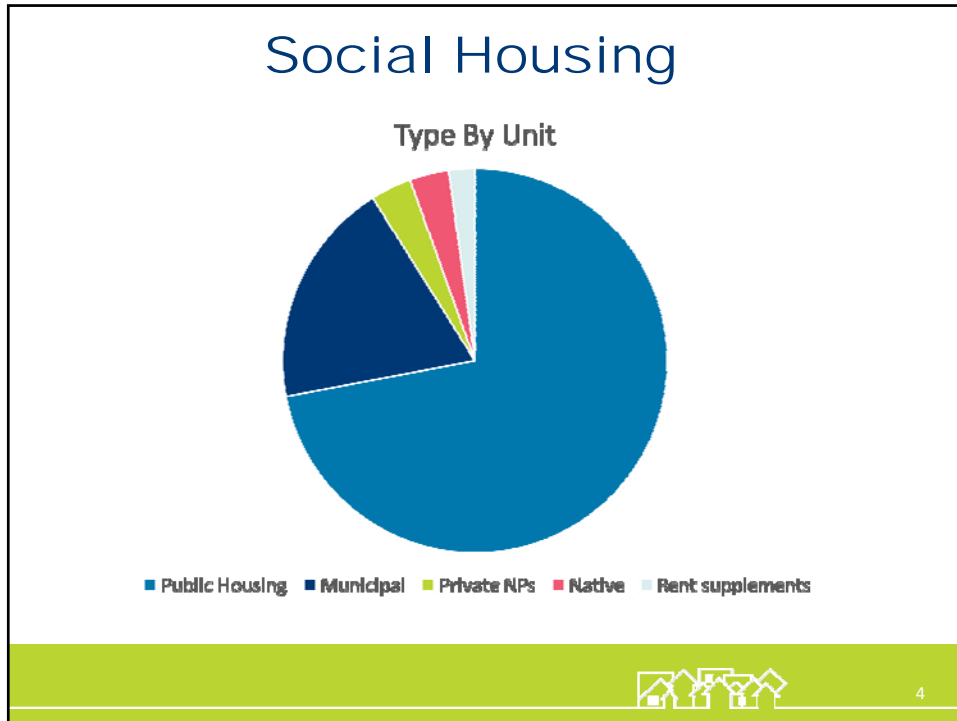
2

23 Municipalities

- 2 main centers;
Temiskaming Shores + Kirkland Lake = 57% of the population
- 21 smaller municipalities
 - located in rural settings
 - population ranging from 123 to 1520
 - a few are unorganized townships



3



Local Priorities

- No local priorities in Timiskaming
 - beyond Province's Special Priority Policy (SPP)
- Chronological wait list management



6

Why no local priorities?



- We are meeting legislative requirements
- People are being housed
- Average wait times were less than 2 years
- SPP applicants were housed in under 30 days
- No indication any local priorities were needed



7

Could local priorities be a possibility?

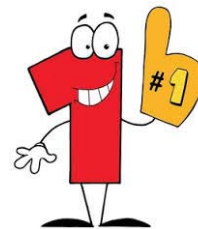
- Our perception has changed gradually
- Open to the idea of implementing local priorities
- 2 local priorities for 2015
 - In Situ Priority
 - Over Housed
 - Under Housed
 - Market to RGI
 - Homeless Priority



8

Local Priority #1

- In-situ urgent status
 - Over housed
 - Under housed
 - Market to RGI
- Establish Processes
- Define eligibility criteria



9

Local Priority #2

- Homeless Urgent Priority
 - building condemned
 - natural disaster
 - children in custody of Children's Aid Society
 - housing is the missing factor
 - no fixed address for at least 6 months
 - red tagged furnace/oil tank



10

Local Priority #2 cont'd.....

- Create steering committee
- Define criteria
- Establish clear processes
- Anticipate negative and positive impacts
- Monitor progress and revise, if necessary



11

Our Journey into local priorities.....

- 10 Year Housing and Homelessness Plan
- How does this play into local priorities?
- Committed to annual reviews
 - October 2014
- Local priorities was one area of great discussion
 - its complex
 - changes reflective of local need
 - beneficial in the long term



12

How did all of this lead to the creation of local Priorities?

- Outreach Services position created
 - October 2013
- Able to collect relevant data to identify;
 - specific needs
 - gaps in services
- Data revealed we did have homelessness
 - who are truly homeless
 - who are a risk of being homeless
- Ability to identify and discuss possibilities



13

In the meantime.....

- Outreach Services Worker
- Build and maintain relationships with local service agencies;
 - Canadian Mental Health Association
 - Home Support & Community Care Access Centre
 - Local Health Unit
 - Landlords
 - Ontario Works & Ontario Disability Support Program (ODSP)
 - Child & Family Services
 - OPP
 - Utility Companies-Hydro, Union gas, telephone etc.
- Provide financial assistance through CHPI



14

What are we looking to accomplish?

- Have in place practices that are reflective of local needs
- Be fair and transparent in our approach
- Be open to new ideas
- Be in the Driver's Seat;
 - the prevention of homelessness in our communities
 - lead by example



15

Our Commitment

- Monitor and manage the implementation of local priorities
- Stay true to the integrity of the RGI wait list
- Make changes when required
- Be open to critique and fair in our approach



16

Thank you!



17