

The background features a light blue and white color scheme with a pattern of binary code (0s and 1s) scattered across it. A prominent blue chain with circular links is draped across the center, extending from the left towards the right. The chain is set against a backdrop of overlapping, semi-transparent blue and white circular shapes that create a sense of depth and movement.

OPEN SOURCE BUSINESS CONFERENCE

Building Your Big Data Future with Open Source

COMPUTERWORLD
OSBC
SAN FRANCISCO



Building Your Big Data Future with Open Source

The Person Who Knows the Most Wins How Data Is Changing the Nature of Business

Mike Olson

Chief Executive Officer



@mikeolson, mike.olson@cloudera.com



Building Your Big Data Future with Open Source

Background

- “Big Data” is so 2010.
- “Extreme Data” is a better name:
 - Volume
 - Variety
 - Velocity



Building Your Big Data Future with Open Source

Extreme

Background

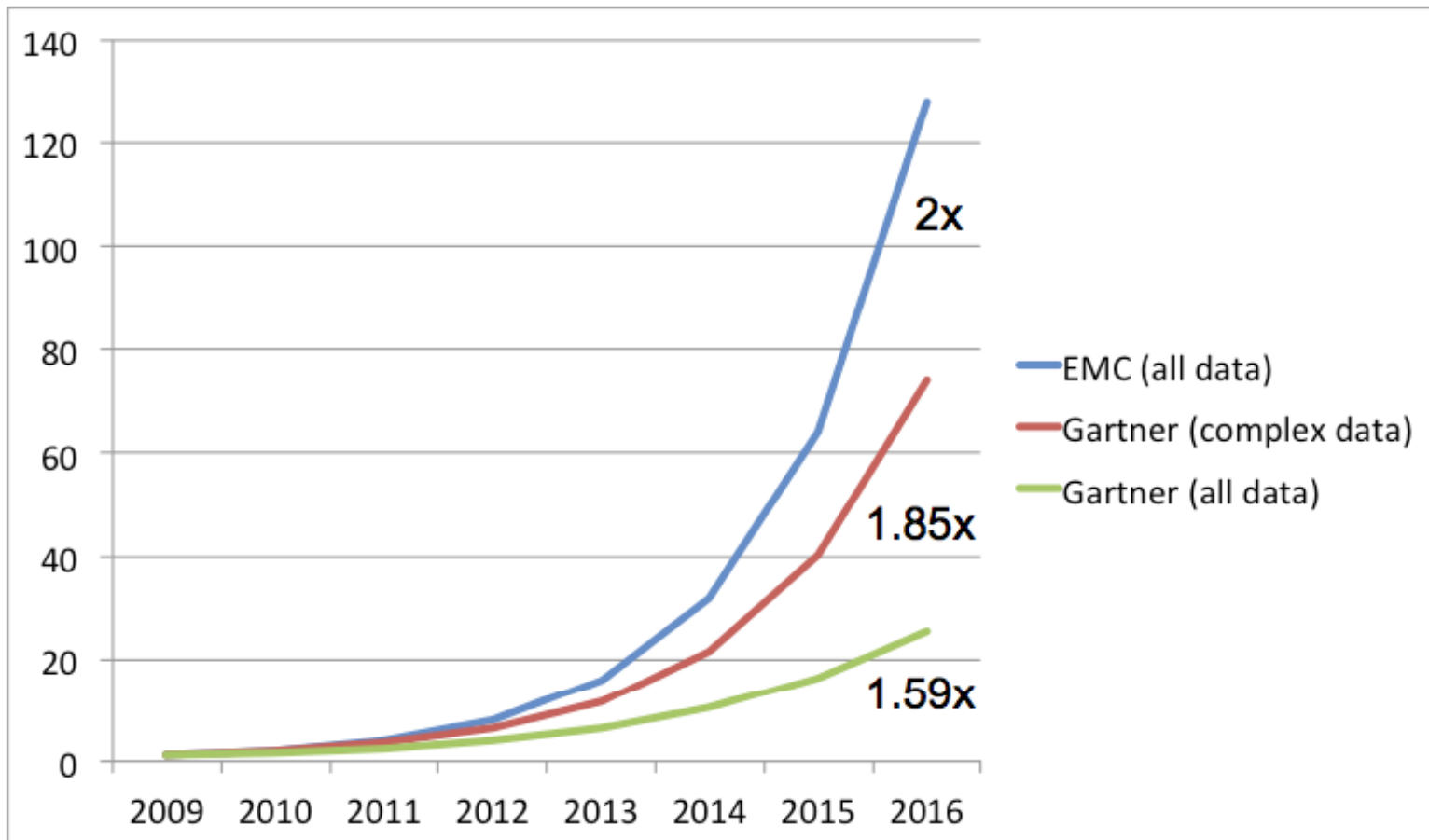
- “Big Data” is so 2010.
- “Extreme Data” is a better name:
 - Volume
 - Variety
 - Velocity



Building Your Big Data Future with Open Source

Extreme

Forecast Growth in Data Volume





Complex Unstructured Raw

Large Pre-relational

Schemaless

Dirty Detailed

**Heterogeneous Linked
Graphs**



@biz gets our servers ready for the royal wedding

By @Twitter ★ Favorite



Building Your Big Data Future with Open Source

Extreme

Volume, Variety, Velocity

1. Accurate modeling of risk in financial portfolios
2. Analysis of customer acquisition costs and churn
3. Product and content recommendations based on user behavior
4. Advertisement targeting based on preferences
5. Point-of-sale transaction analysis
6. Capture and analyze traffic data on a network to better manage bandwidth among devices
7. Real-time and forensic analysis of network activity to detect and respond to threats
8. Monitor financial trades for evidence of money laundering, fraud
9. Deliver better search results based on user behavior
10. Data exploration and experimentation



Building Your Big Data Future with Open Source

Extreme

Volume, Variety, Velocity

1. Accurate modeling of risk in financial portfolios
2. Analysis of customer acquisition costs and churn
3. Product and content recommendations based on user behavior
4. Advertisement targeting based on preferences
5. Point-of-sale transaction analysis
6. Capture and analyze traffic data on a network to better manage bandwidth among devices
7. Real-time and forensic analysis of network activity to detect and respond to threats
8. Monitor financial trades for evidence of money laundering, fraud
9. Deliver better search results based on user behavior
10. Data exploration and experimentation



Building Your Big Data Future with Open Source

Extreme

Optimizing Hotel Search

Behavioral analysis based on user activity on web site;

Clustering of users with similar behavior into cohorts;

Cohort behavior used to predict behavior and preferences of individuals.

Change search

San Jose International Airport, San Jose, California, United States | Check-in: Tue, Apr 26, 2011 | Check-out: Sat, Apr 30, 2011 | Nights: 4 | Room(s): 1 | Guest(s): 2

Call us to book!
1-800-733-1297 (toll free)

Why book on Orbitz? Price Assurance + Low Price Guarantee + No Orbitz hotel change or cancel fees

Stars

- Any
- ★★★★★
- ★★★★☆
- ★★★☆☆
- ★★☆☆☆
- ★☆☆☆☆
- ★☆☆☆☆

Reviewer score

1.0 to 5.0

Amenities

- Any
- Airport Shuttle (7)
- Free parking (123)
- Pool (134)
- Spa services (4)
- Wireless Internet (59)

[See all](#)

Hotel chain

- Any
- All Seasons Europe (0)
- Aloft Hotels (0)

San Jose Airport Garden Hotel

★★★☆☆ Save | Review

Nightly rates from ~~\$119~~ **\$83** Total Price ~~\$94~~ Price Assurance

Select

Overview Description Photos Map Amenities

Reviewer score **3.4** out of 5 66 reviews

1740 North First St., San Jose, CA 95112-4584
1.2 miles North from the center of San Jose International Airport

[More hotel details](#) | [Virtual tour](#)

Special Offer

- Book Now and Save 30%

[View all available promotions](#)

Arena Hotel

★★★☆☆ Save | Review

Nightly rates from ~~\$66~~ **\$66** Total Price ~~\$73~~ Price Assurance

Select

Overview Description Photos Map Amenities

Reviewer score **3.6** out of 5 77 reviews

817 The Alameda, San Jose, CA 95126
1.6 miles Southeast from the center of San Jose International Airport

Source: Orbitz, "Extending the Data Warehouse with Hadoop",
<http://www.cloudera.com/resource/chicago-data-summit-extending-the-enterprise-data-warehouse-with-hadoop-orbitz-worldwide>



Building Your Big Data Future with Open Source

Extreme

Recommendations

Predictive analytics present users with choices that are more likely to appeal to them.

More appealing choices translates into more rooms booked.

Further refinements: A/B testing on displayed options to increase the transaction rates and prices.




The Whitehall Hotel Rooms

Superior King
This room offers one king bed with cable TV, air conditioning, in room safe, hair dryer, iron and ironing board.

Pinnacle King
One king bed. Restored antique furnishings, crown molding, original artworks. Premium bedding with 390-thread-count sheets. Turndown service. Oversized desk with leather desk chair. Bathrooms with marble-and-tile countertops and floors, bathrobes, designer toiletries. Cable TV with premium channels. Hair dryer, in-room safe, minibar. High-speed Internet access (surcharge) and wireless printing to business center (surcharge). Two dual-line telephones (one in the bathroom). Umbrella, clock radio. Complimentary ice service and 24-hour room service.

[Show all room descriptions](#)

Recommendations for you
Customers who viewed The Whitehall Hotel also booked these hotels

Hotel Name	Reviewer score
The Talbott Hotel 	4.6 out of 5
Ambassador East Hotel 	3.8 out of 5
The Tremont Chicago Hotel at Magnificent Mile 	3.7 out of 5

Source: Orbitz, "Extending the Data Warehouse with Hadoop", <http://www.cloudera.com/resource/chicago-data-summit-extending-the-enterprise-data-warehouse-with-hadoop-orbitz-worldwide>



Building Your Big Data Future with Open Source

Extreme

Volume, Variety, Velocity

1. Accurate modeling of risk in financial portfolios
2. Analysis of customer acquisition costs and churn
3. Product and content recommendations based on user behavior
4. Advertisement targeting based on preferences
5. Point-of-sale transaction analysis
6. Capture and analyze traffic data on a network to better manage bandwidth among devices
7. Real-time and forensic analysis of network activity to detect and respond to threats
8. Monitor financial trades for evidence of money laundering, fraud
9. Deliver better search results based on user behavior
10. Data exploration and experimentation

Extreme

VoIP call quality depends on quality of service – if data packets cross the network at different speeds, users will hear static or drops in their calls.

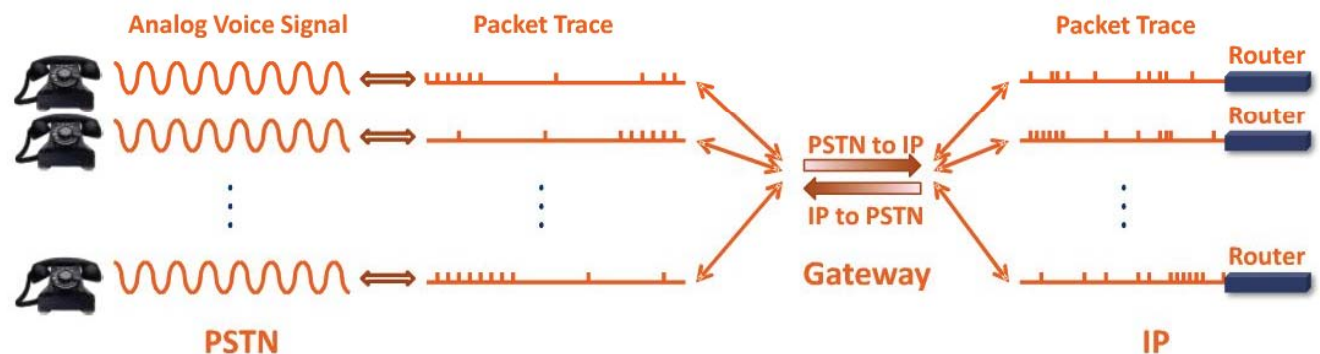
Analyzing the distribution of packet transmission rates and delays, and correlating with QoS guarantees in the network, allows carriers to provide high-quality service cheaply.

VoIP Packetization and Transmission

- Semi-call Packetization

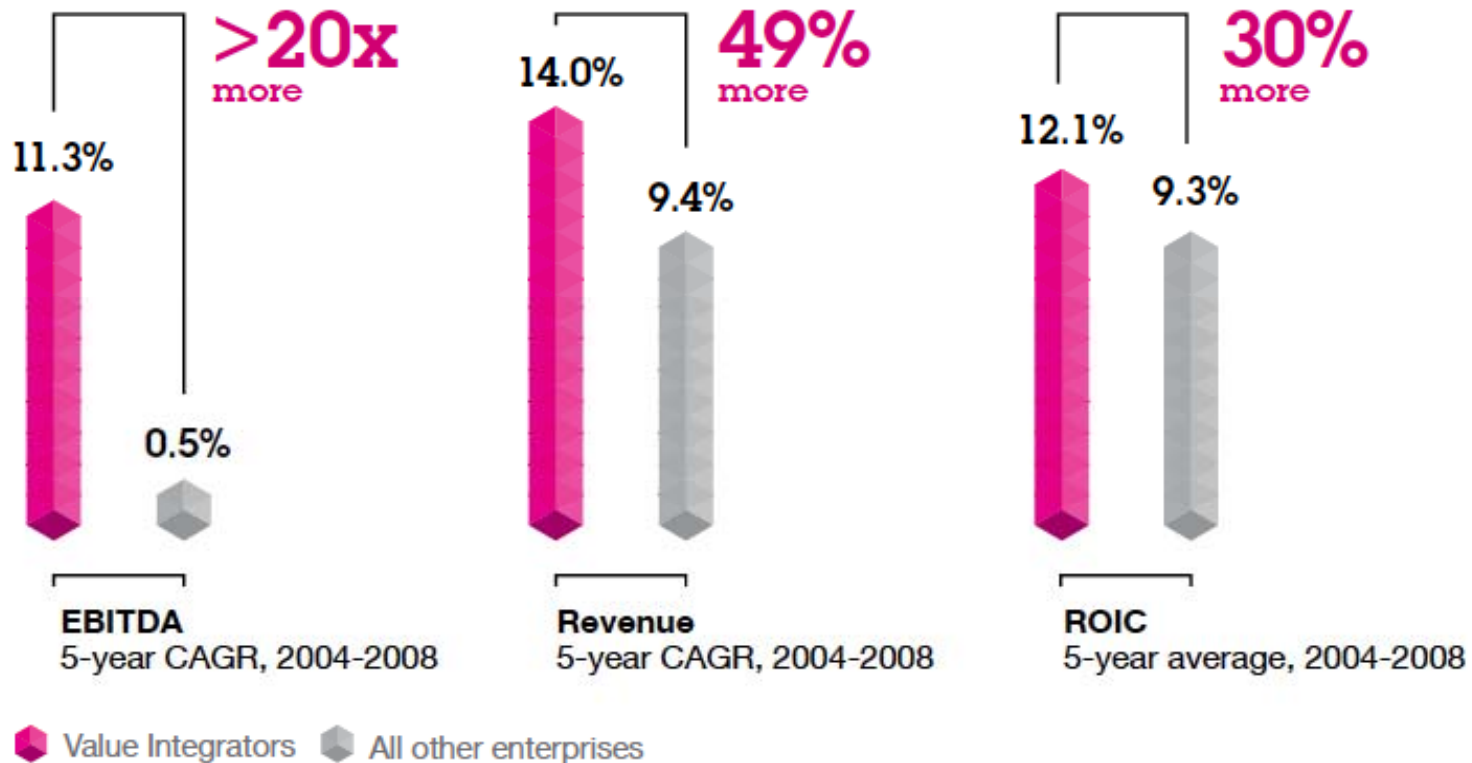


- Transmission through IP network and PSTN via gateway



Extreme

Should a CEO Care?



Source: IBM, "The New Value Integrator,"
<http://www-935.ibm.com/services/us/cfo/cfostudy2010/>

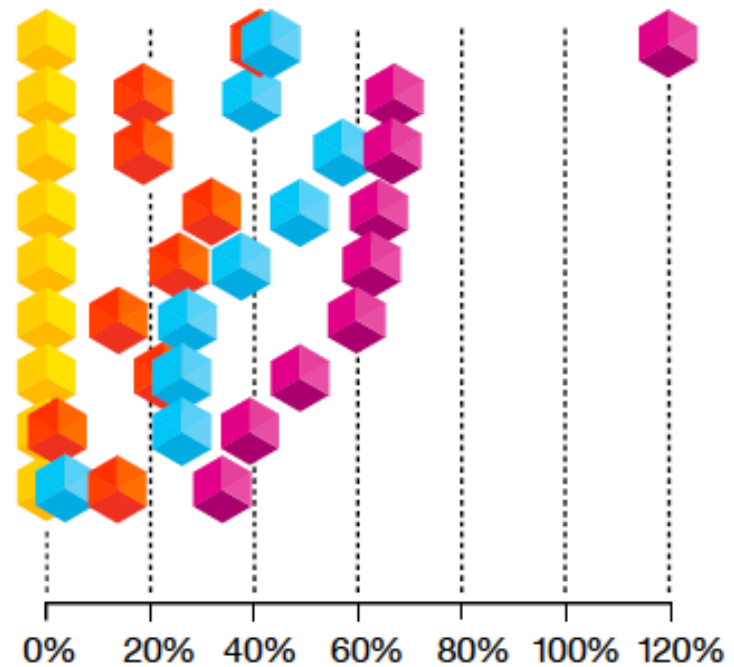


Building Your Big Data Future with Open Source

Extreme

Should a CFO Care?

- Driving integration of information across the enterprise
- Measuring / monitoring business performance
- Developing your people in the Finance organization
- Providing inputs into enterprise strategy
- Executing continuous Finance process improvements
- Supporting / managing / mitigating enterprise risk
- Driving Finance cost reduction
- Driving enterprise cost reduction
- Strengthening compliance programs and internal controls



- Scorekeepers (baseline)
- Disciplined Operators
- Constrained Advisors
- Value Integrators

Percent more effective than baseline

Source: IBM, "The New Value Integrator," <http://www-935.ibm.com/services/us/cfo/cfostudy2010/>



Building Your Big Data Future with Open Source

Extreme

Should You Care?

- In business, medicine, agriculture, energy and other domains, data presents us with transformative opportunities.
- The stakes have never been higher.
- Winning is imperative.